



ROTARYSET™ DISTRIBUTORS



Bulletin RSD-14

ROTARYSET DISTRIBUTORS

RotarySet Distributors are manufactured with single, double and triple spouts. Options include replaceable lining in the inner spouts and ducts, electric operators and special flanging.

Easy installation and parts access was of primary concern in the design of this distributor. The design provides a weather and dust tight enclosure.

All distributors are fully assembled and operated in our plant. They may be split into sections as necessary for shipping and handling.

On manual units the spout locking mechanisms positively engage in laser cut indexing rings ensuring error free positioning and eliminates mixing between adjacent ducts.

All electric operated RotarySet Distributors use our patented EDI Control. This system is rugged enough to withstand extreme environment conditions and is easily adapted to plant automated controls. The EDI system is fully described in it own brochure.

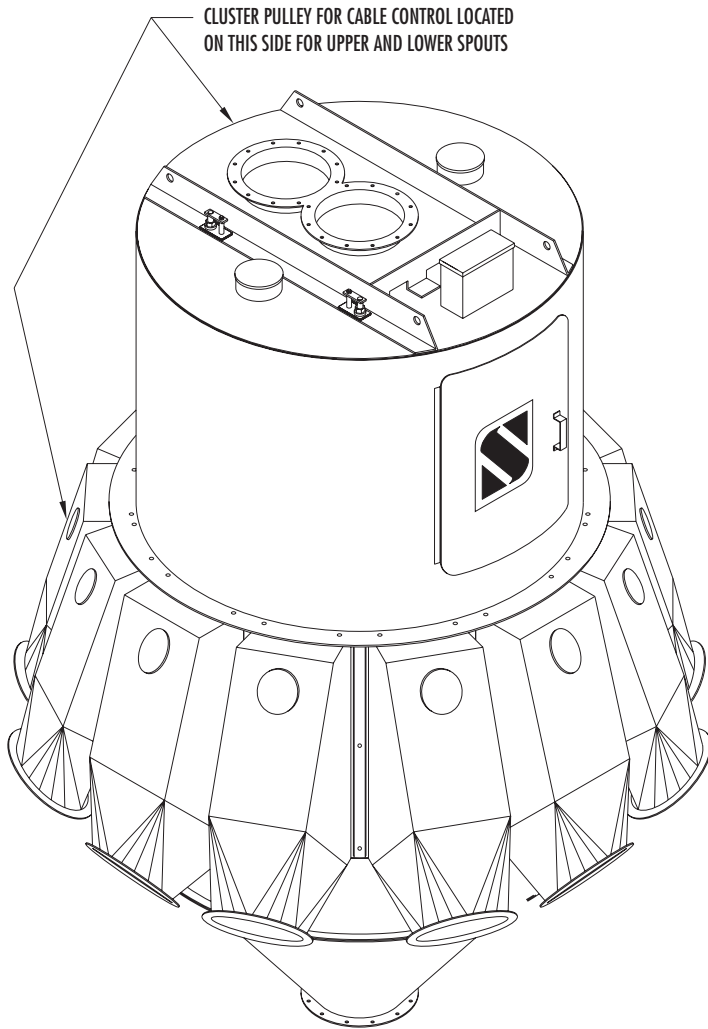
Round flanged inlets and ducts (outlets) conform to standard spouting methods, ruling out the need for special transitions.

Numerous openings afford easy access to the inside for inspection and maintenance. All internal working parts may be removed with minimal disassembly. Lining or relining of ducts can be done in place.

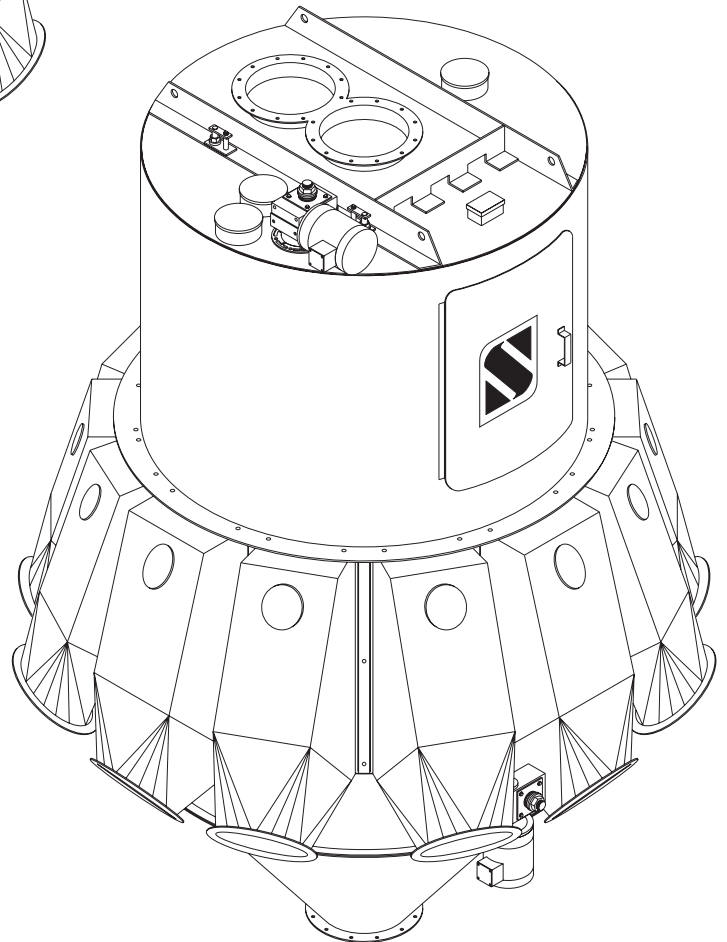
The center pipe of the upper spout has a special double wall construction that prevents material contamination through the lower spout in the event that the upper spout wears a hole in the center pipe.

FEATURES & OPTIONS

- MANUAL OR ELECTRIC CONTROLS
- EASY WEATHER TIGHT FIELD ASSEMBLY
- SINGLE ADJUSTMENT FOR EACH SPOUT
- BALL BEARING MOUNTINGS FOR ALL SPOUTS
- 52 DEGREE FEED MODELS AVAILABLE
- FULL CAPACITY AT ALL POSITIONS
- OPTIONAL 100% OVERFLOW ON ALL SPOUTS
- PAINTED, GALVANIZED OR STAINLESS STEEL CONSTRUCTION



MANUAL CONTROL



ELECTRIC CONTROL

AIR FANS FOR DISTRIBUTORS

A question we are often asked is; why does a distributor always seem to fill up with dust? When grain running through a distributor is directed to a bin, the air in the bin is displaced. Even with vented bins, a good share of the air goes back up the spout and into the distributor. Naturally this air is laden with dust, some of which settles in the distributor as the air velocity slows down in the larger area. All distributors will have some dust settle into the other outlets. Though this phenomenon occurs in many systems it does not hurt in most applications, so nobody notices. An optional fan can create a positive air pressure in the distributor to help prevent the build up of moisture and dust from the bin.

STANDARD & OPTIONAL FEATURES

45° DISTRIBUTOR

This is the standard distributor supplied. It is used with whole grains, fertilizer and free flowing feed products.

52° DISTRIBUTOR

The 52 degree distributor is used whenever you have a sluggish product such as mixed feed with fat or molasses in it.

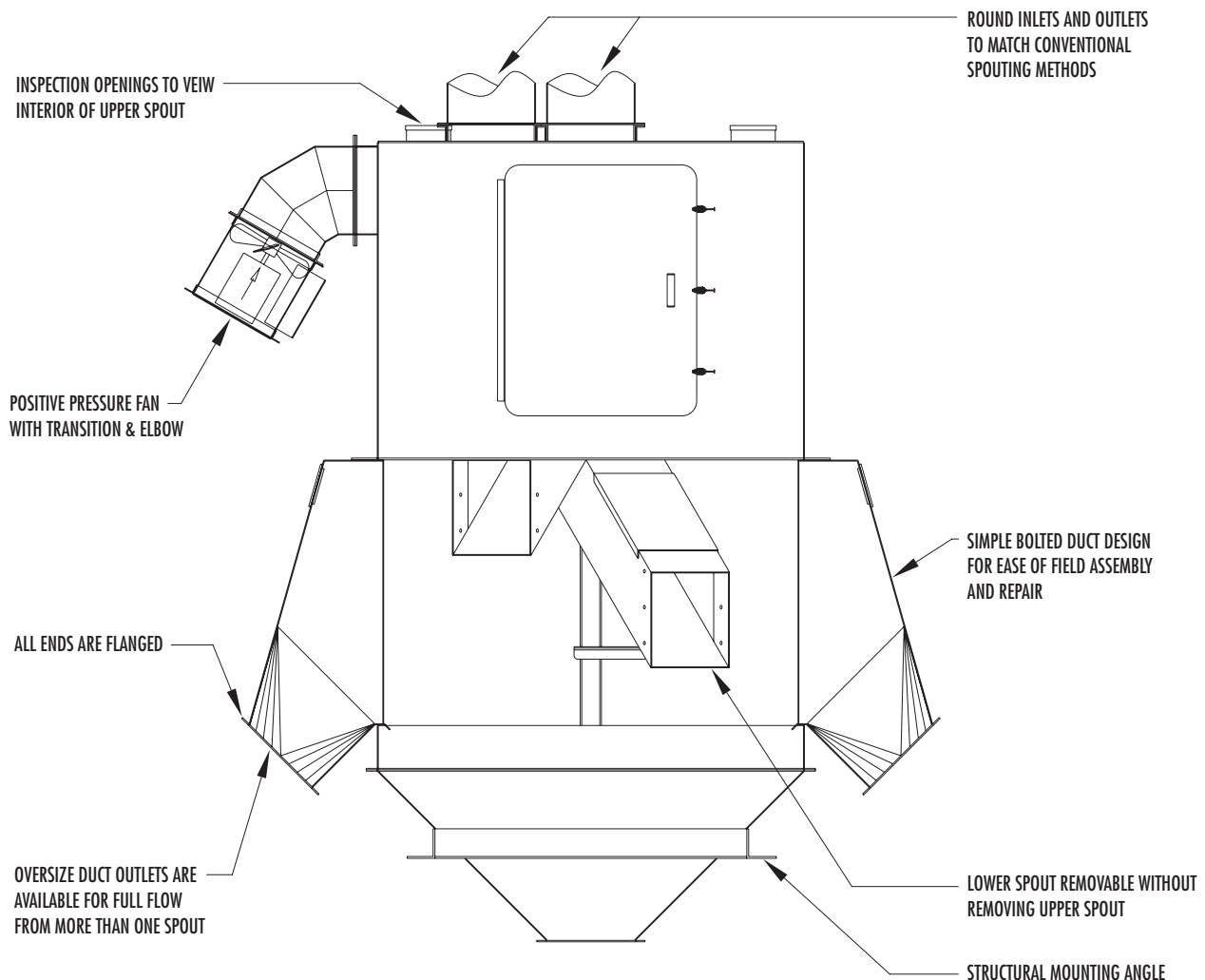
STAINLESS STEEL OR GALVANIZED STEEL DISTRIBUTORS

Any style distributor can be ordered using either stainless steel (type 304 standard) or galvanized steel construction.

STANDARD DUTY

The inner spouts are lined on bottoms and 3/4 up the sides with 3/16 inch A.R. steel. No liners in ducts.

STANDARD OVERFLOW STYLE



STANDARD & OPTIONAL FEATURES

HEAVY DUTY

Includes all standard duty lining options plus the ducts are lined with 14 GA A.R. steel.

EXTRA HEAVY DUTY

The inner spouts are lined on the bottoms and 3/4 up the sides with 1/4 inch Urethane.

Ducts are fully lined with 1/4 inch Urethane.

STYLE E1

The inner spouts are lined on the bottoms and 3/4 inch up the sides with 1/4 inch thick ceramic tile. Half the vertical pipe on middle and upper spouts are partially lined with 1/4 inch thick ceramic tile. All ducts are lined in wear areas with 1/4 inch thick ceramic tile.

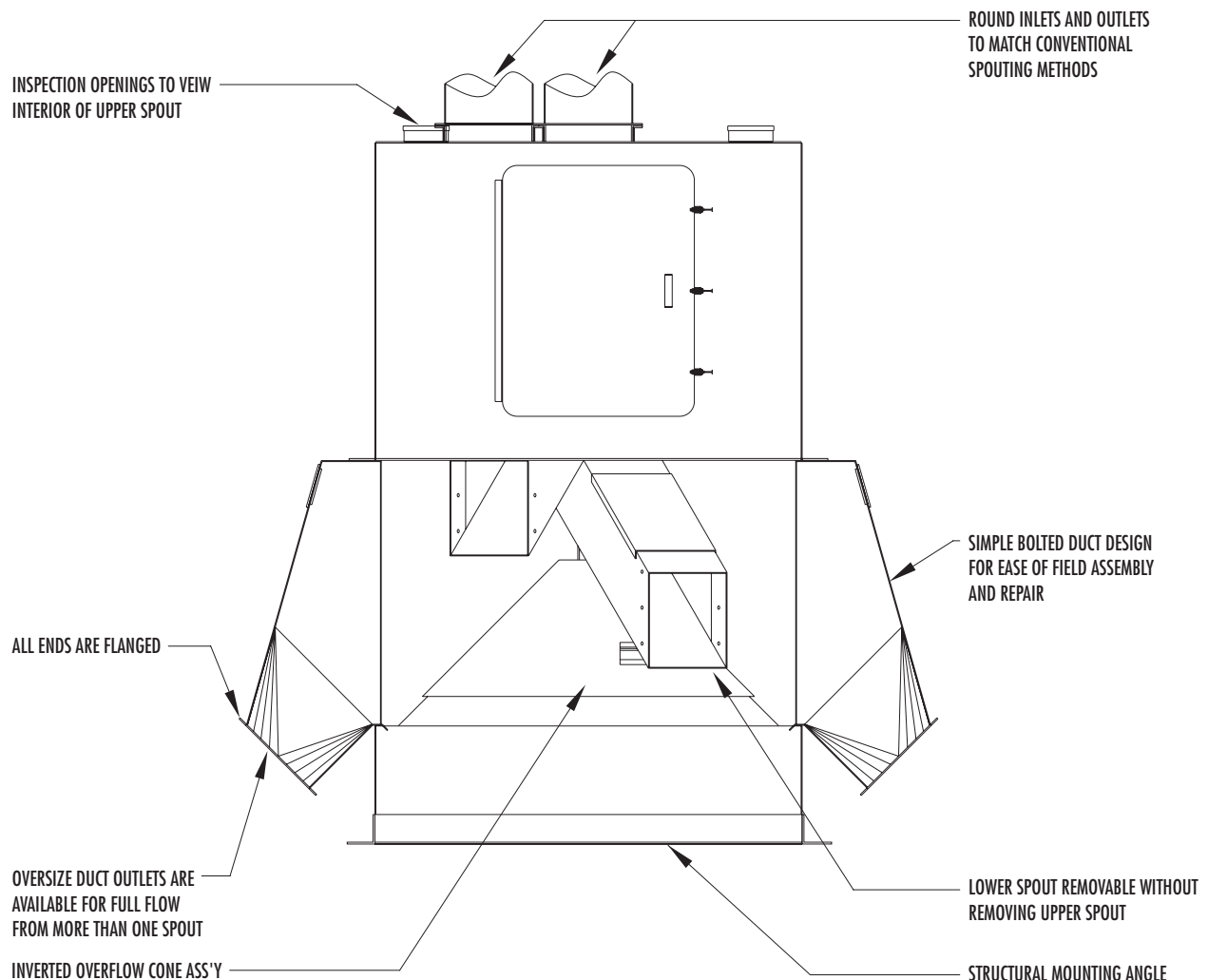
ELECTRICALLY OPERATED

Electronic "EDI" Control is available for RotarySet Distributors. For better detailed information see EDI brochure.

OVERSIZE DUCT OUTLETS

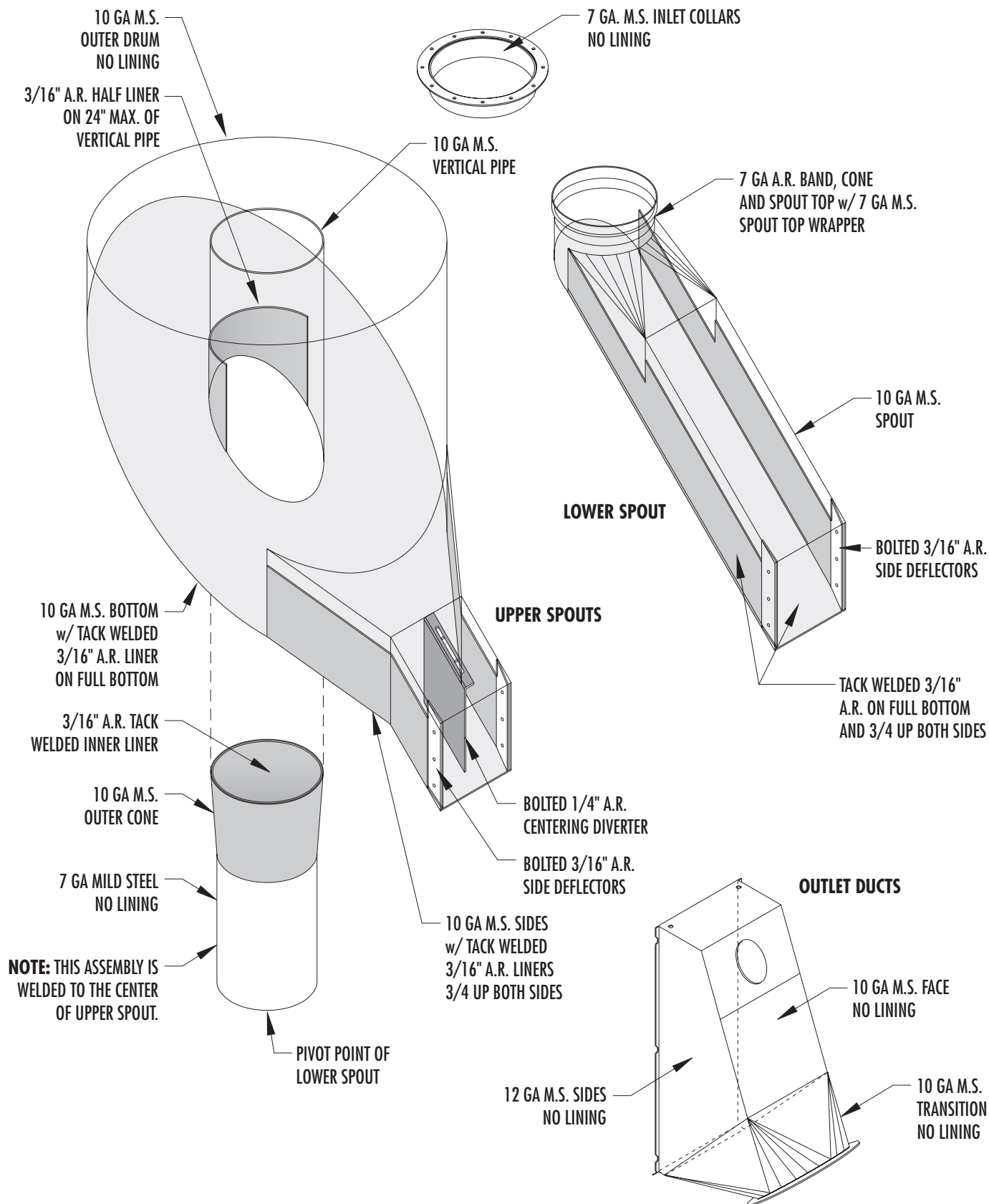
Oversize discharge ducts are available to allow you to feed into a specific duct with more than one inner spout simultaneously. An example would be an 8 inch double distributor with one duct having a 12 inch diameter opening rather than the normal 8 inch diameter.

NON-OVERFLOW STYLE



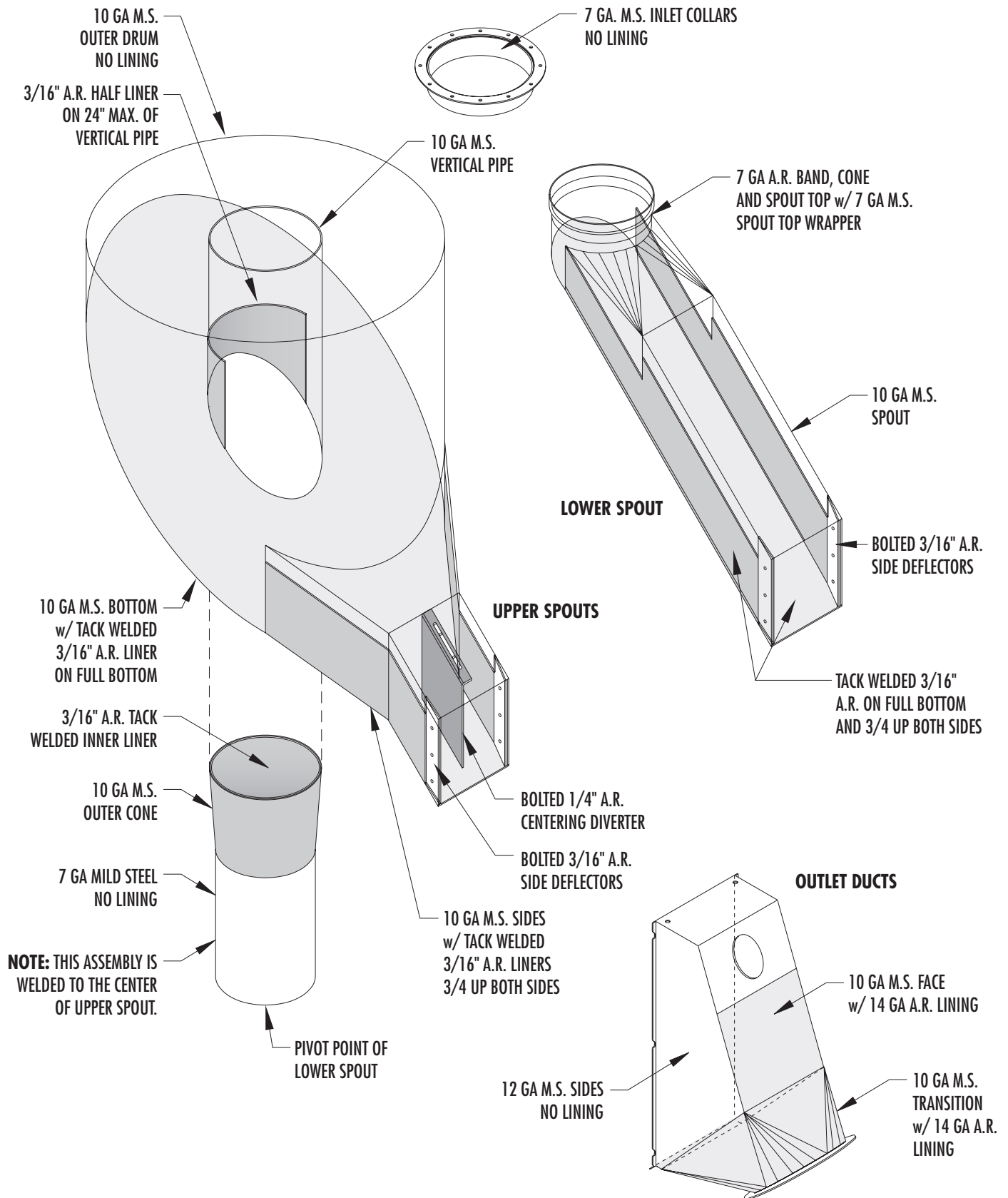
ROTARYSET DISTRIBUTOR LINERS

STANDARD DUTY



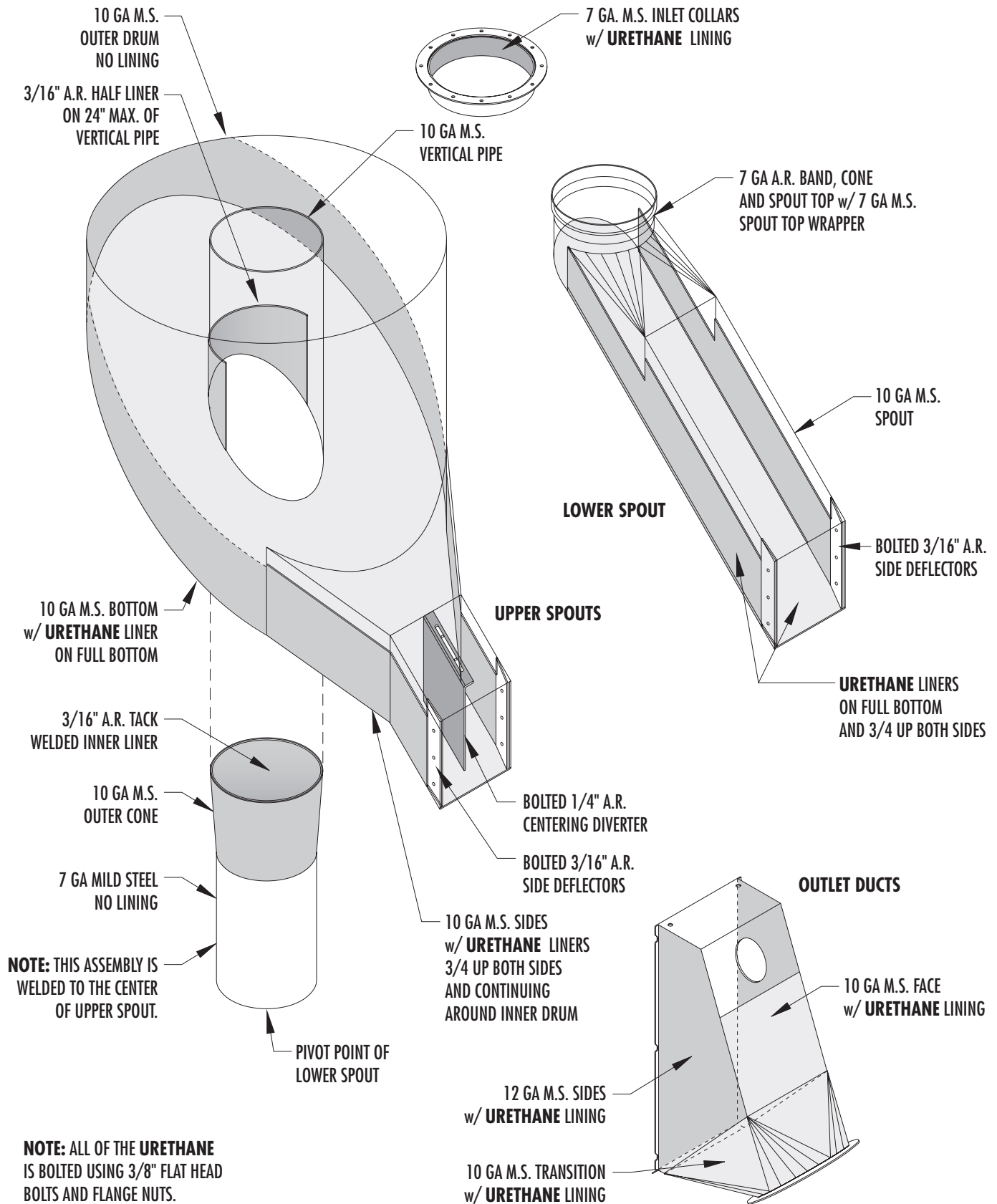
ROTARYSET DISTRIBUTOR LINERS

HEAVY DUTY



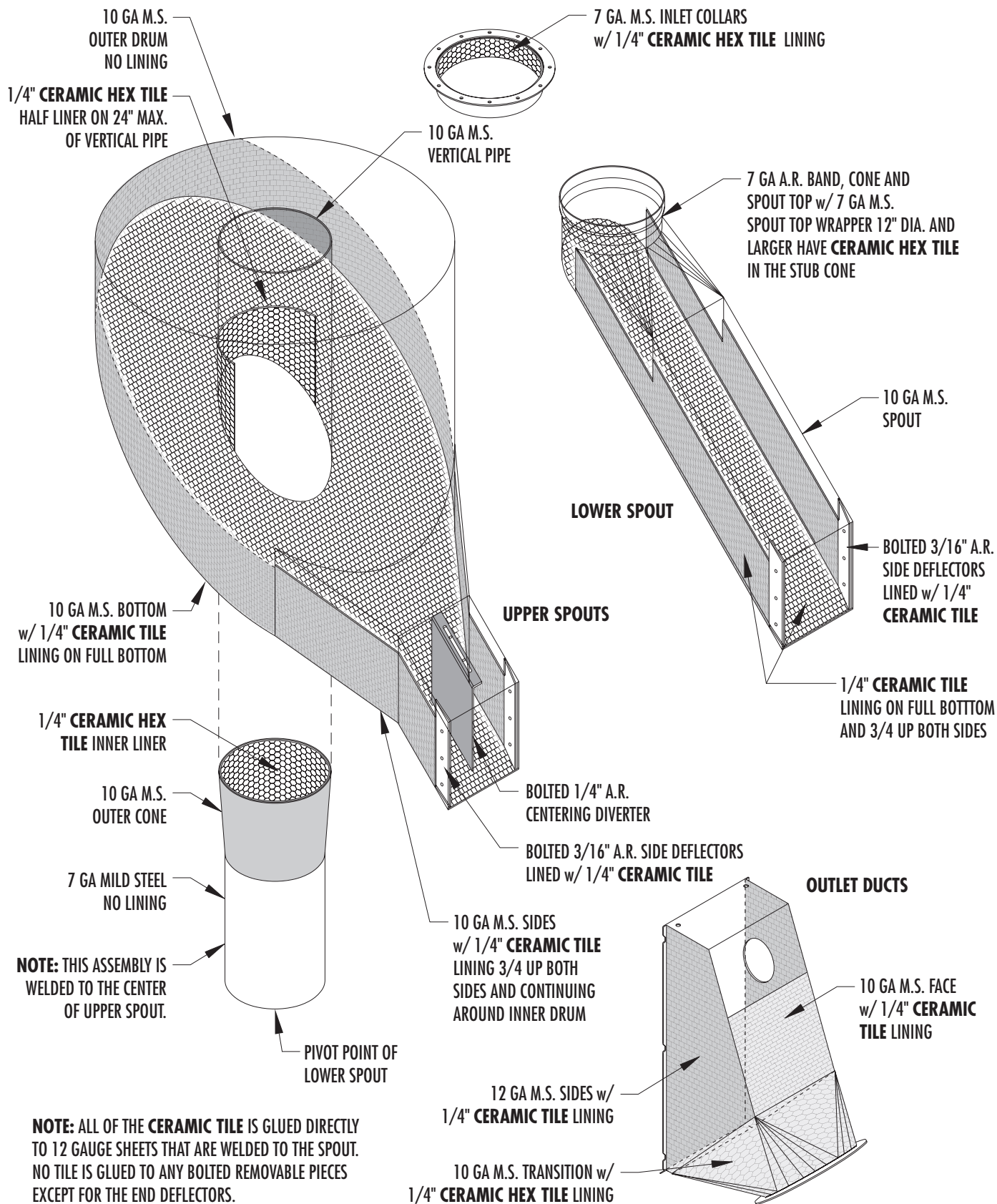
ROTARYSET DISTRIBUTOR LINERS

EXTRA HEAVY DUTY

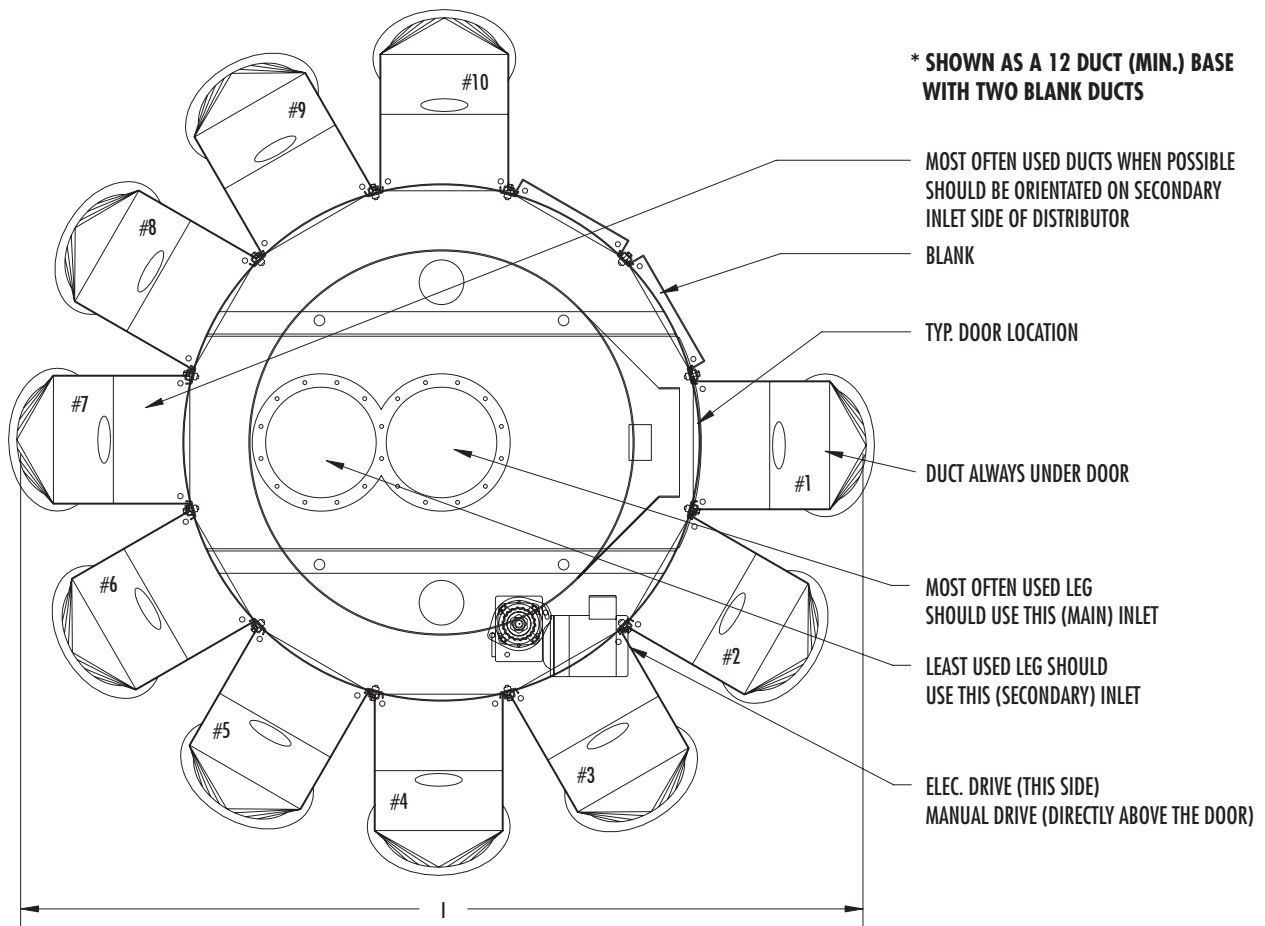


ROTARYSET DISTRIBUTOR LINERS

STYLE E1 TILE



DOUBLE ROTARY-SET DISTRIBUTORS



ROTARYSET DISTRIBUTOR MODELS

The single, double, and triple Rotaryset distributors are similar in design. The drive arrangements and door locations are common on all three models (see pages 3 and 10). When using a double or triple model, the center inlet should be the primary used spout. The biggest difference between the three models is the minimum number of outlet ducts. These minimum number of outlet ducts are listed below.

Minimum number of outlet ducts per distributor model

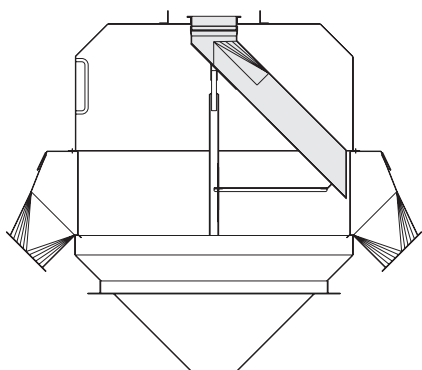
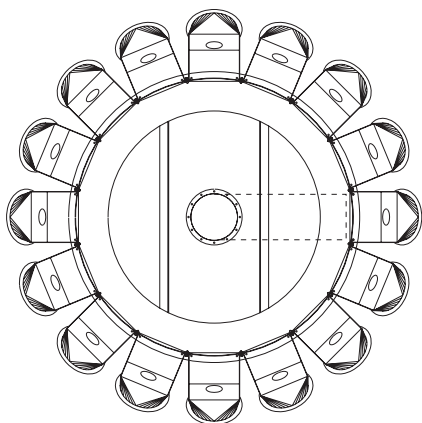
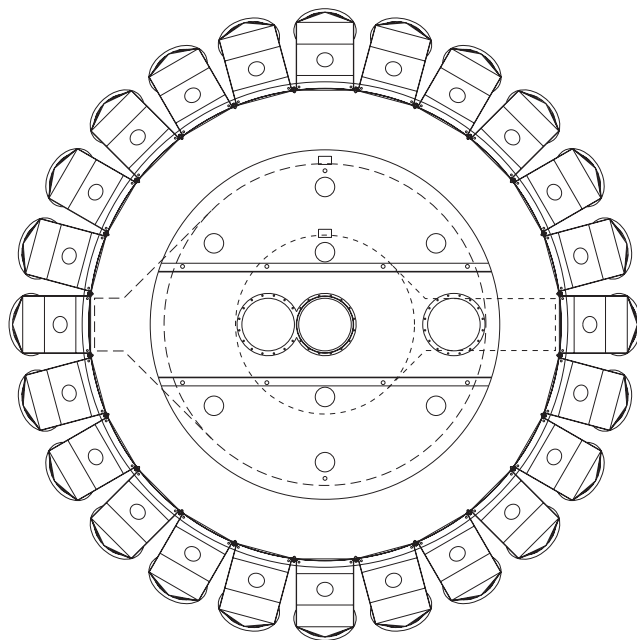
Single RotarySet distributor = 8 outlet ducts

Double RotarySet distributor = 12 outlet ducts

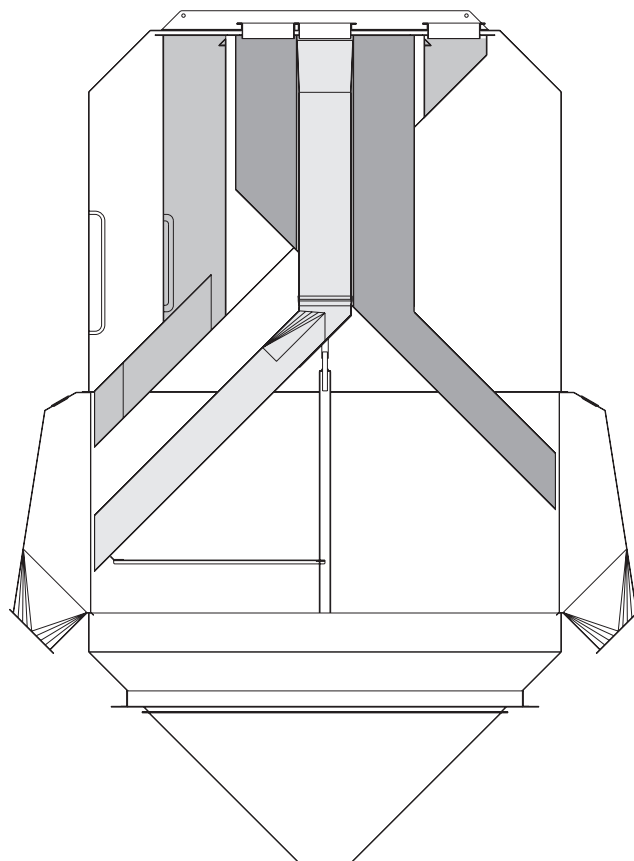
Triple RotarySet distributor = 22 outlet ducts

Blank panels can be used in place of an outlet duct if you are not using all of the ducts on a RotarySet distributor.

NOTE: SEE PAGE 12 FOR DOUBLE ROTARYSET DISTRIBUTOR.

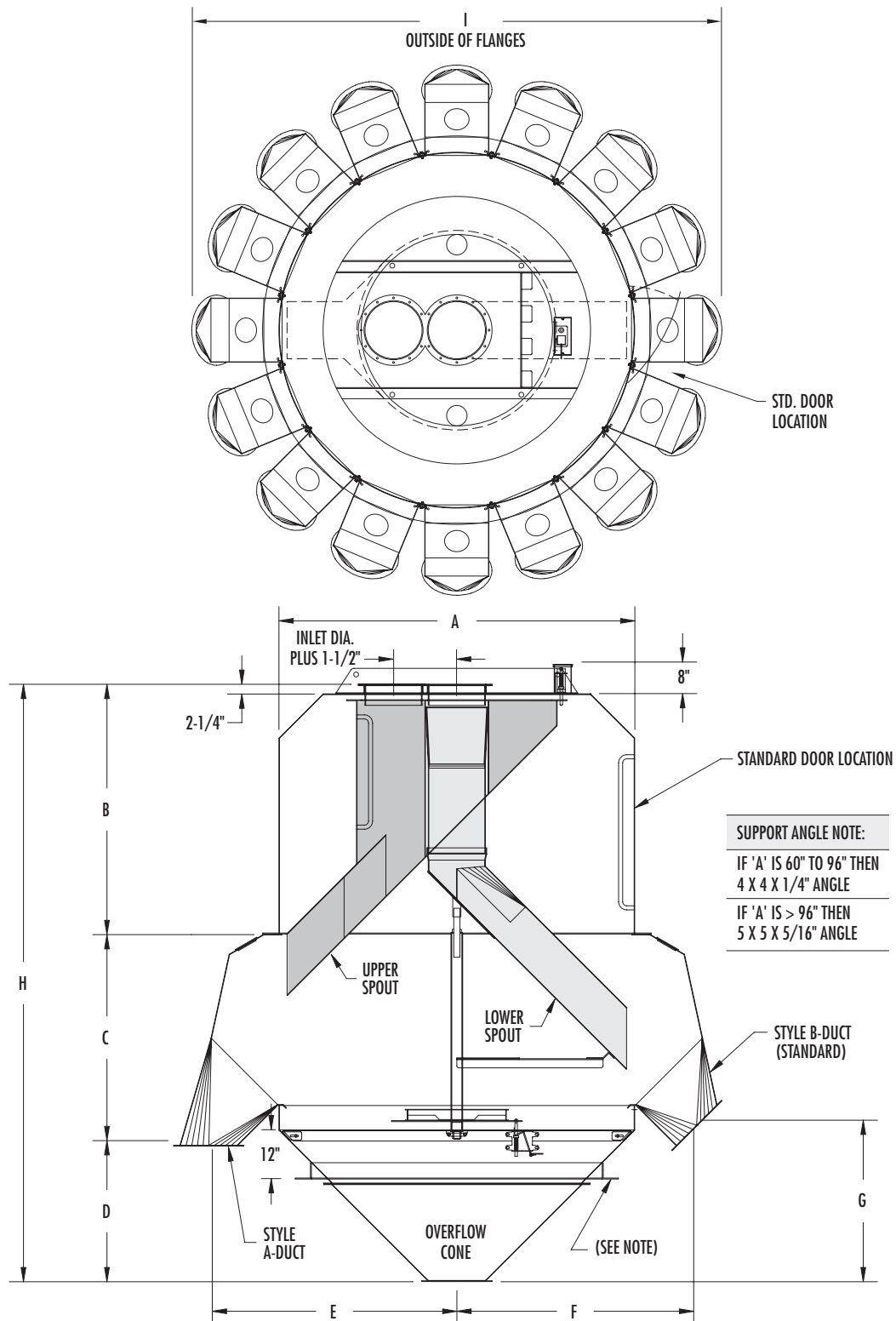


SINGLE SPOUT



TRIPLE SPOUT

ROTARY-SET DISTRIBUTORS - DIMENSIONS



NOTES

FOR DIMENSIONS SEE PAGES 13-15

The standard support angle ring is located 12 inches below the lower band as shown above. This dimension can often be factory located at a different dimension per customer request. Consult factory

Dimensions "D", "G" and "H" are increased 6 inches total on all distributors with electric drives. Manual distributors are not affected which is shown above.

8" and 10" / 45° DOUBLE SPOUT - DIMENSIONS

SIZE	# of DUCTS	A	B	C	D	E	F	G	H	I
8"	12	42.438	36.188	30.750	17.813	31.813	30.000	20.750	84.688	67.563
	13	45.938	37.938	30.750	19.563	33.563	31.750	22.500	88.250	71.063
	14	49.438	39.750	30.750	21.313	35.313	33.500	24.250	91.813	74.563
	15	52.875	41.500	30.750	23.000	37.063	35.250	25.938	95.250	78.063
	16	56.375	43.250	30.750	25.125	38.750	36.938	28.063	99.125	81.438
	17	59.875	45.000	30.750	26.875	40.563	38.750	29.813	102.625	85.063
	18	63.375	46.813	30.750	28.625	42.250	40.438	31.563	106.188	88.438
	19	66.875	48.563	30.750	30.375	44.063	42.250	33.313	109.688	92.063
	20	70.313	50.313	30.750	32.063	45.813	44.000	35.000	113.126	95.563
	21	73.813	52.438	30.750	33.813	47.625	45.813	36.750	117.000	99.188
	22	77.313	53.875	30.750	35.563	49.375	47.563	38.500	120.188	102.688
	23	80.813	55.625	30.750	37.313	51.188	49.375	40.250	123.688	106.313
	24	84.313	57.438	30.750	39.063	52.938	51.125	42.000	127.250	109.813
	25	87.813	59.188	30.750	40.813	54.688	52.875	43.750	130.750	113.313
	26	91.250	60.938	30.750	42.563	56.500	54.688	45.500	134.250	116.938
	27	94.750	62.688	30.750	43.813	58.250	56.438	46.750	137.250	120.438
	28	98.250	64.500	30.750	44.313	60.000	58.188	47.250	139.563	123.937
	29	101.750	66.250	30.750	46.063	61.750	59.938	49.000	143.063	127.438
	30	105.250	68.063	30.750	47.813	63.563	61.750	50.750	144.625	131.063
	31	108.750	70.125	30.750	49.563	65.313	63.500	52.500	150.438	134.563
	32	112.250	71.625	30.750	51.313	67.063	65.250	54.250	153.688	138.063
	33	115.688	73.313	30.750	53.063	68.875	67.063	56.000	157.125	141.688
	34	119.188	75.125	30.750	54.813	70.625	68.813	57.750	160.688	145.188
	35	122.688	76.875	30.750	56.563	72.375	70.563	59.500	164.188	148.688
	36	126.188	78.688	30.750	58.313	74.188	72.375	61.250	167.750	152.313

SIZE	# of DUCTS	A	B	C	D	E	F	G	H	I
10"	12	50.125	40.875	38.125	19.063	37.500	36.125	22.750	98.063	81.250
	13	54.250	42.938	38.125	21.188	39.563	38.188	24.875	102.250	85.375
	14	58.375	45.063	38.125	23.313	41.625	40.250	27.000	106.500	89.500
	15	62.500	47.125	38.125	25.500	43.812	42.437	29.188	110.750	93.875
	16	66.625	49.438	38.125	27.563	46.000	44.625	31.063	115.125	98.250
	17	70.750	51.313	38.125	29.688	48.063	46.688	33.375	119.125	102.375
	18	74.875	53.375	38.125	31.813	50.125	48.750	35.500	123.313	106.500
	19	79.000	55.375	38.125	33.875	52.188	50.813	37.563	127.375	110.625
	20	83.125	57.563	38.125	35.938	54.250	52.875	39.625	131.625	114.750
	21	87.250	59.688	38.125	38.125	56.375	55.000	41.813	135.938	119.000
	22	91.375	61.750	38.125	40.250	58.438	57.063	43.938	140.125	123.125
	23	95.500	63.813	38.125	42.313	60.500	59.125	46.000	144.250	127.250
	24	99.625	65.938	38.125	44.438	62.625	61.250	48.125	148.500	131.500
	25	103.750	68.000	38.125	46.563	64.750	63.375	50.250	152.688	135.750
	26	107.875	70.125	38.125	48.625	66.813	65.438	52.313	156.875	139.875
	27	112.000	72.188	38.125	50.750	68.937	67.563	54.438	161.063	144.125
	28	116.125	74.250	38.125	52.875	71.063	69.688	56.563	165.250	148.375
	29	120.250	76.375	38.125	55.000	73.125	71.750	58.688	169.500	152.500
	30	124.375	78.438	38.125	57.125	75.250	73.875	60.813	173.688	156.750
	31	128.500	80.563	38.125	59.188	77.313	75.938	62.875	177.875	160.875
	32	132.625	82.625	38.125	61.250	79.437	78.063	64.938	182.000	165.125
	33	136.750	84.688	38.125	63.375	81.500	80.125	67.063	186.188	169.250
	34	140.875	86.813	38.125	65.500	83.625	82.250	69.188	190.438	173.500
	35	145.000	88.875	38.125	67.625	85.688	84.313	71.313	194.625	177.625
	36	149.125	91.000	38.125	69.688	87.813	86.438	73.375	198.813	181.875

ALL DIMENSIONS ARE IN INCHES.

12" and 14" / 45° DOUBLE SPOUT - DIMENSIONS

SIZE	# of DUCTS	A	B	C	D	E	F	G	H	I
12"	12	57.875	45.500	44.562	20.688	43.812	42.125	25.062	110.812	94.687
	13	62.625	47.875	44.562	23.063	46.250	44.625	27.438	115.500	99.625
	14	67.375	50.250	44.562	25.437	48.625	47.000	29.812	120.25	104.375
	15	72.125	52.687	44.562	28.188	50.875	49.250	32.625	125.437	108.875
	16	76.875	55.125	44.562	30.563	53.500	51.875	34.875	130.250	117.375
	17	81.625	57.500	44.562	32.938	55.875	54.250	37.312	135.000	122.125
	18	86.375	59.875	44.562	35.250	58.312	56.625	39.500	139.687	123.750
	19	91.125	62.312	44.562	37.625	60.687	59.062	42.000	144.500	128.500
	20	95.937	64.750	44.562	40.000	63.062	61.437	44.375	149.312	133.250
	21	100.687	67.125	44.562	42.375	65.500	63.875	46.750	154.062	138.125
	22	105.437	69.500	44.562	44.750	67.875	66.250	49.125	158.812	142.875
	23	110.187	71.937	44.562	47.125	70.250	68.625	51.500	163.625	147.625
	24	114.937	74.312	44.562	49.500	72.687	71.062	53.812	168.375	152.562
	25	119.687	76.750	44.562	51.812	75.062	73.437	56.187	173.125	157.250
	26	124.500	79.062	44.562	54.187	77.500	75.875	58.562	177.812	162.125
	27	129.187	81.500	44.562	56.500	79.875	78.250	60.875	182.562	166.875
	28	134.000	83.562	44.562	58.875	82.250	80.625	63.250	187.000	171.625
	29	138.750	86.375	44.562	61.250	84.687	83.062	65.625	192.187	176.500
	30	143.500	88.750	44.562	63.625	87.062	85.437	68.000	196.937	181.250
	31	148.250	91.187	44.562	66.000	89.500	87.875	70.375	201.750	186.125
	32	153.000	93.562	44.562	68.313	91.875	90.250	72.688	206.437	190.875
	33	157.750	95.937	44.562	70.688	94.250	92.625	75.063	211.187	192.625
	34	162.500	98.375	44.562	73.063	96.625	95.000	77.437	216.000	200.375
	35	167.312	100.812	44.562	75.438	99.062	97.437	79.812	220.812	205.250

SIZE	# of DUCTS	A	B	C	D	E	F	G	H	I
14"	12	65.625	50.125	52.000	22.125	49.687	47.750	27.187	124.250	107.875
	13	71.000	52.812	52.000	24.812	52.625	50.688	29.875	129.625	113.500
	14	76.375	55.562	52.000	27.562	55.250	53.375	32.625	135.062	118.875
	15	81.750	58.375	52.000	30.437	58.312	56.375	35.500	140.750	124.937
	16	87.125	61.062	52.000	33.187	60.750	58.875	38.125	146.125	129.812
	17	92.500	63.812	52.000	35.812	63.500	61.562	40.875	151.562	135.250
	18	97.937	66.500	52.000	38.500	66.250	64.312	43.500	157.000	140.750
	19	103.312	69.187	52.000	41.250	69.000	67.063	46.312	162.437	146.250
	20	106.687	72.125	52.000	43.875	71.687	69.750	48.937	168.000	151.625
	21	114.062	74.687	52.000	46.562	74.437	72.500	51.625	173.250	157.125
	22	119.500	77.437	52.000	49.312	77.125	75.250	54.312	178.750	162.625
	23	124.875	80.000	52.000	51.937	79.875	77.938	63.000	183.937	168.000
	24	130.250	82.875	52.000	54.687	82.625	80.687	59.687	189.500	173.500
	25	135.687	85.500	52.000	57.312	85.375	83.438	62.375	194.812	179.000
	26	141.062	88.312	52.000	60.062	88.000	86.125	65.125	200.375	184.375
	27	146.437	90.937	52.000	62.687	90.875	88.938	67.750	205.625	190.000
	28	151.812	93.625	52.000	65.375	93.563	91.625	70.437	211.000	195.375
	29	157.250	96.375	52.000	68.062	96.313	94.375	73.125	216.437	200.875
	30	162.687	99.125	52.000	70.875	98.937	97.000	75.937	222.000	206.062
	31	168.000	101.812	52.000	73.437	101.750	99.813	78.500	227.250	211.750

ALL DIMENSIONS ARE IN INCHES.

16" and 18" / 45° DOUBLE SPOUT - DIMENSIONS

SIZE	# of DUCTS	A	B	C	D	E	F	G	H	I
16"	12	73.375	54.625	60.312	23.625	56.062	53.875	29.312	138.563	121.313
	13	79.375	57.625	60.312	26.625	59.125	56.938	32.313	144.563	127.438
	14	85.375	60.750	60.312	29.875	62.187	60.000	35.562	150.938	133.562
	15	91.375	63.812	60.312	32.875	65.250	63.062	38.562	157.000	139.688
	16	97.375	66.875	60.312	35.875	68.312	66.125	41.562	163.063	145.812
	17	103.375	69.875	60.312	38.875	71.375	69.188	44.563	169.063	151.938
	18	109.437	72.937	60.312	41.938	74.437	72.250	47.625	175.188	158.063
	19	115.437	76.000	60.312	44.938	77.500	75.313	50.625	181.250	164.188
	20	121.500	79.062	60.312	48.000	80.500	78.313	53.688	187.375	170.188
	21	127.500	82.062	60.312	51.000	85.563	81.375	56.688	193.375	176.313
	22	133.562	85.187	60.312	54.063	86.625	84.437	59.750	199.563	182.437
	23	139.562	88.125	60.312	57.063	89.625	87.438	62.750	205.500	188.438
	24	145.625	91.187	60.312	60.125	92.687	90.500	65.813	211.625	194.562
	25	151.625	94.250	60.312	63.125	95.750	93.563	68.813	217.688	200.688
	26	157.625	97.250	60.312	66.125	98.750	96.563	71.812	223.688	206.688
	27	163.687	100.312	60.312	69.188	101.813	99.625	74.875	229.813	212.813
	28	169.687	103.312	60.312	72.188	104.875	102.688	77.875	235.813	218.938

SIZE	# of DUCTS	A	B	C	D	E	F	G	H	I
18"	12	81.062	59.250	67.813	25.062	62.250	59.750	31.562	152.125	135.375
	13	87.687	62.562	67.813	28.375	65.688	63.188	34.875	158.750	141.375
	14	94.375	66.062	67.813	31.687	69.062	66.563	37.688	165.562	148.125
	15	101.000	69.437	67.813	35.000	72.438	69.938	41.500	172.250	154.875
	16	107.625	72.813	67.813	38.562	75.813	73.313	45.063	179.188	161.625
	17	114.312	76.187	67.813	41.875	79.188	76.688	48.375	185.875	168.375
	18	120.937	79.500	67.813	45.250	82.563	80.063	51.750	189.563	176.250
	19	127.625	82.875	67.813	48.563	85.938	83.438	55.063	199.250	181.875
	20	134.250	86.250	67.813	51.938	89.313	86.813	58.438	206.000	188.625
	21	140.937	89.562	67.813	55.250	92.688	90.188	61.750	212.625	195.375
	22	147.625	92.937	67.813	58.563	96.063	93.563	65.063	219.313	202.125
	23	154.250	96.312	67.813	61.938	99.438	96.938	68.438	226.063	208.875
	24	160.937	99.687	67.813	65.250	102.750	100.250	71.750	232.750	215.500
	25	167.562	103.000	67.813	68.563	106.188	103.688	75.063	239.375	222.375

ALL DIMENSIONS ARE IN INCHES.

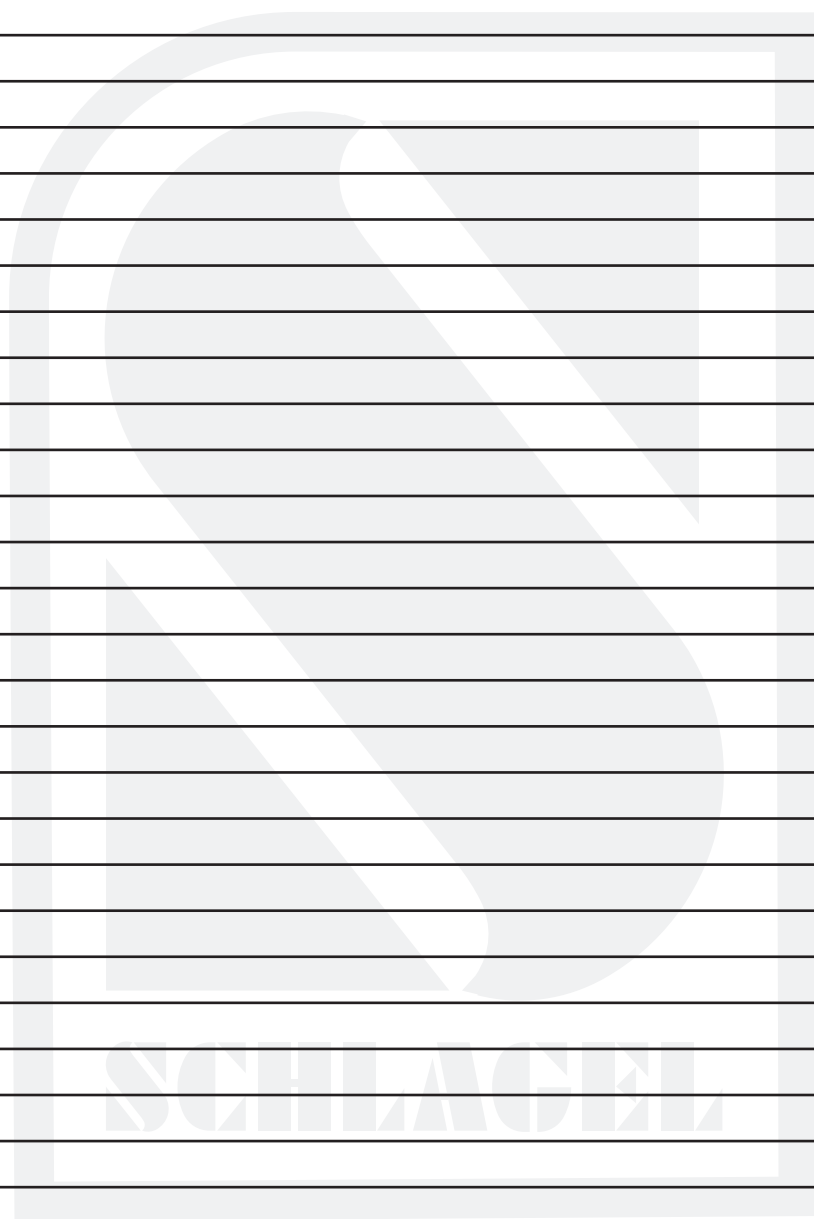
45° STANDARD DUTY DOUBLE SPOUT - WEIGHTS

# of DUCTS	8"	10"	12"	14"	16"	18"	20"	22"	24"
12	1134	1592	2129	2745	3441	4216	5070	6003	7016
13	1257	1765	2362	3046	3818	4679	5627	6663	7788
14	1380	1939	2594	3346	4195	5141	6184	7323	8560
15	1503	2112	2827	3647	4572	5604	6741	7983	9332
16	1627	2286	3059	3947	4950	6067	7298	8644	10105
17	1750	2459	3292	4248	5327	6529	7855	9304	10877
18	1873	2632	3524	4548	5704	6992	8412	9964	11649
19	1996	2806	3757	4849	6081	7454	8969	10624	12421
20	2119	2979	3989	5149	6458	7917	9526	11284	---
21	2273	3196	4280	5524	6929	8494	10220	12106	---
22	2428	3413	4570	5899	7399	9070	10913	---	---
23	2582	3631	4861	6274	7870	9647	---	---	---
24	2737	3848	5152	6649	8340	11224	---	---	---
25	2891	4065	5443	7025	8811	---	---	---	---
26	3045	4282	5733	7400	9281	---	---	---	---
27	3200	4499	6024	7775	9752	---	---	---	---
28	3354	4717	6315	8150	10222	---	---	---	---
29	3509	4934	6605	8525	---	---	---	---	---
30	3663	5151	6896	8900	---	---	---	---	---
31	3817	5368	7187	9275	---	---	---	---	---
32	3972	5585	7477	---	---	---	---	---	---
33	4126	5803	7768	---	---	---	---	---	---
34	4281	6020	8059	---	---	---	---	---	---
35	4435	6237	8350	---	---	---	---	---	---
36	4589	6454	---	---	---	---	---	---	---
37	4744	6671	---	---	---	---	---	---	---
38	4898	6889	---	---	---	---	---	---	---
39	5053	7106	---	---	---	---	---	---	---
40	5207	7323	---	---	---	---	---	---	---
41	5361	7540	---	---	---	---	---	---	---

NOTE: WEIGHTS LISTED ARE FOR BASIC MANUAL DISTRIBUTOR
WITH STANDARD LINING PACKAGE AND NO OTHER OPTIONS.

ALL WEIGHTS ARE IN LBS.

NOTES

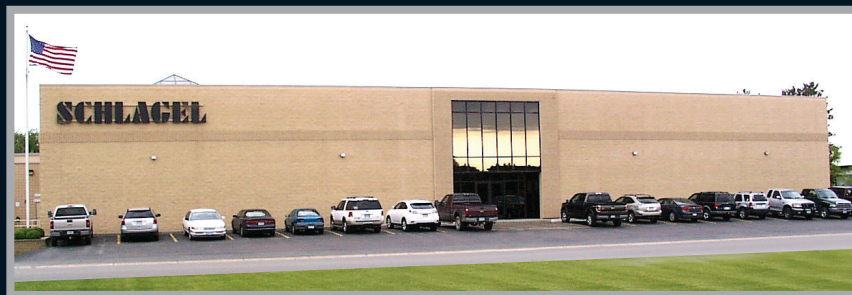


NOTES



NOTES





SCHLAGEL

491 North Emerson Street • Cambridge MN 55008-1316 U.S.A.

Toll Free (800) 328-8002 FAX (763) 689-5310

Local / International (763) 689-5991 EMAIL sales@schlagel.com

www.schlagel.com

©2014 Schlagel Inc. 07/14 Rev. C Printed in U.S.A.